

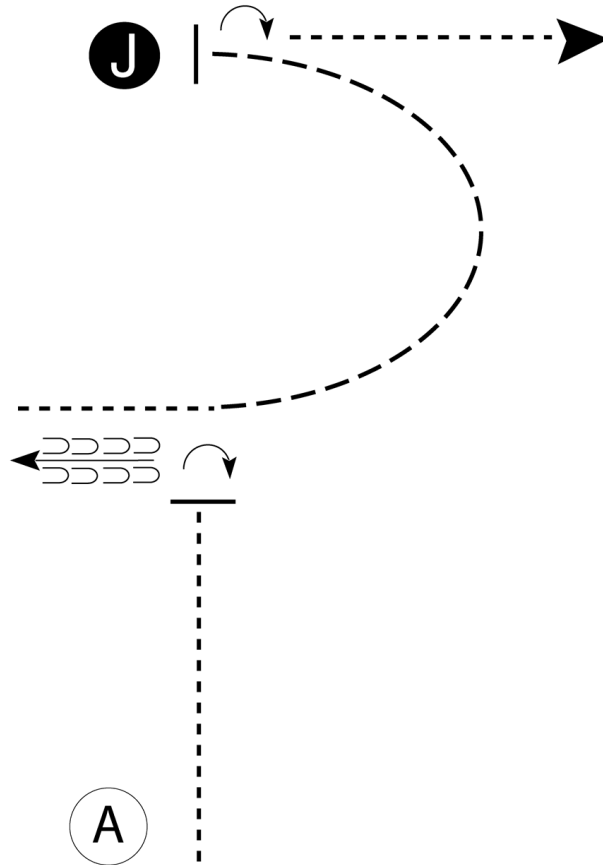
SJCHC Open Horse Show

#3/4 Showmanship (14 & U/15 & O)

Show Date: 04-12-2025

w w w . H o r s e S h o w P a t t e r n s . c o m

w w w . H o r s e S h o w P a t t e r n s . c o m



Be ready at A.

1. When acknowledged, walk half way to Judge.
2. Stop and perform a 1/4 turn.
3. Back approximately one horse length.
4. Walk until even with Judge.
5. Trot in a half circle to Judge.
6. Stop and set up for inspection.
7. When dismissed, perform a 1/2 turn and walk straight away from Judge.

Walk	-----
Trot	- - - - -
Back	← ← ← ←
Marker	(B)
Judge	(J)

Follow the instructions of your ring steward.

[S/1-80]

Pattern Provided by:

Jennifer Sawyer, Judge

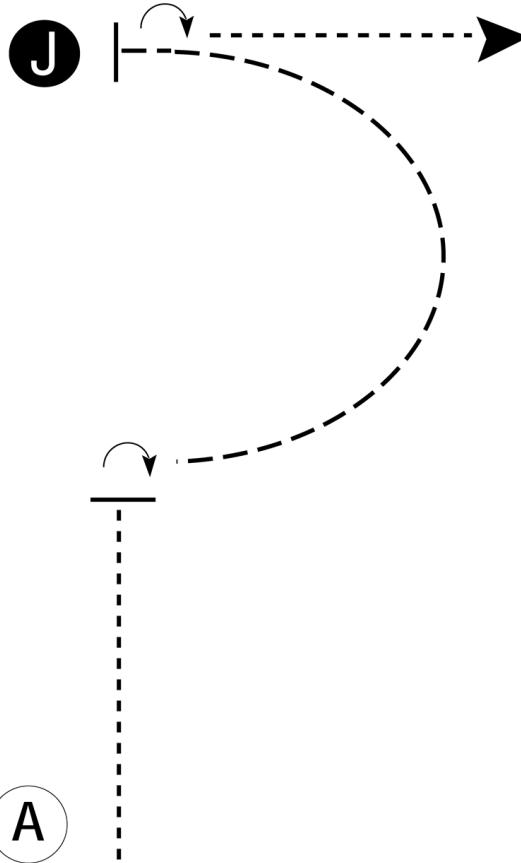
SJCHC Open Horse Show

#1/2 Showmanship W/T (14 & U/15 & O)

Show Date: 04-12-2025

w w w . H o r s e S h o w P a t t e r n s . c o m

w w w . H o r s e S h o w P a t t e r n s . c o m



Be ready at A.

1. When acknowledged, walk half the distance to Judge.
2. Stop and perform a 1/4 turn.
3. Trot in a half circle to Judge.
4. Stop and set up for inspection.
5. When dismissed, perform a 1/2 turn and walk straight away from Judge.

Follow the instructions of your ring steward.

Walk	-----
Trot	- - - - -
Back	←
Marker	Ⓟ
Judge	Ⓝ

[S/WT-80]

Pattern Provided by:
Jennifer Sawyer, Judge

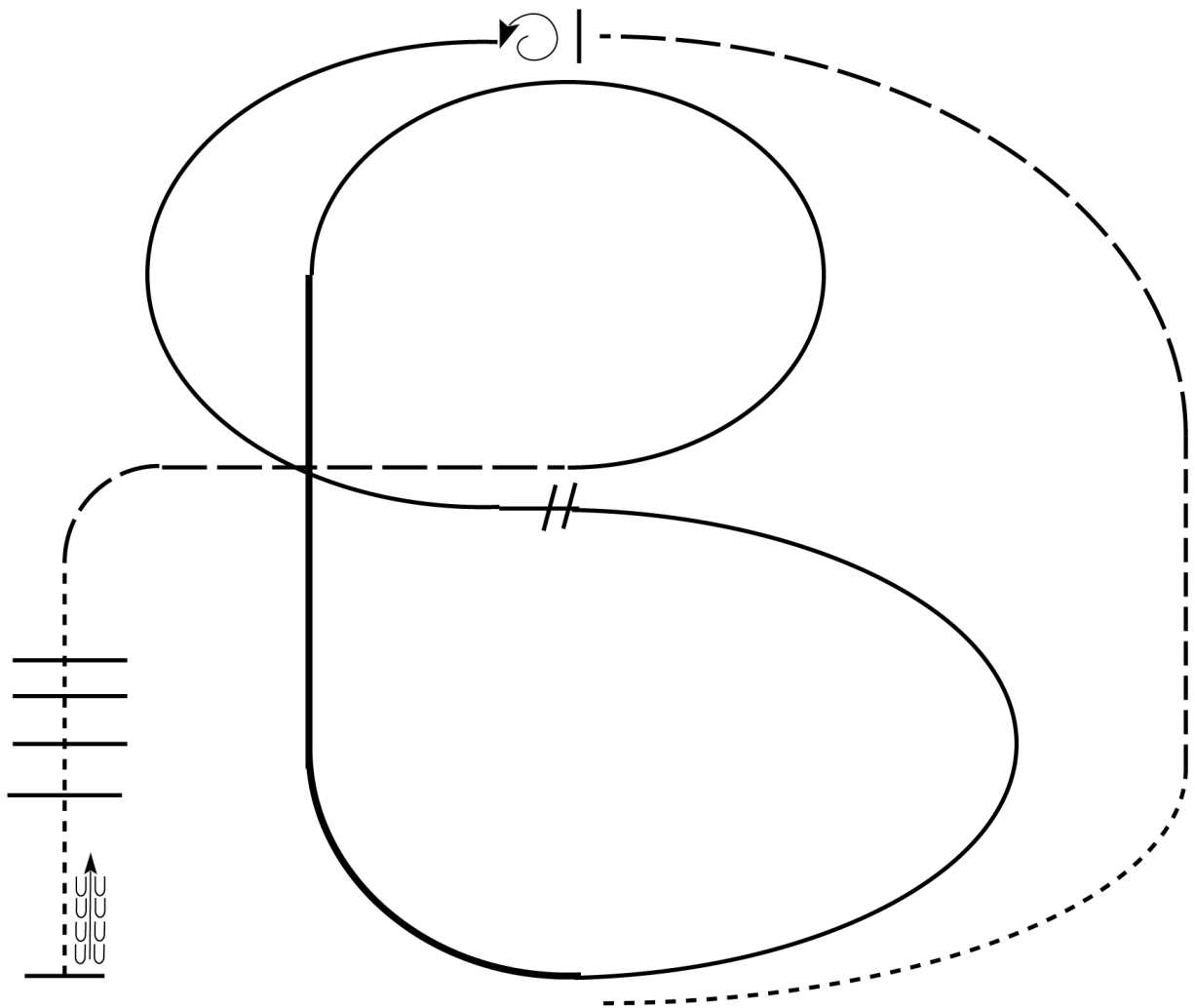
SJCHC Open Horse Show

#17/19 Ranch Riding (14 & U/15 & O)

Show Date: 04-12-2025

w w w . H o r s e S h o w P a t t e r n s . c o m

w w w . H o r s e S h o w P a t t e r n s . c o m

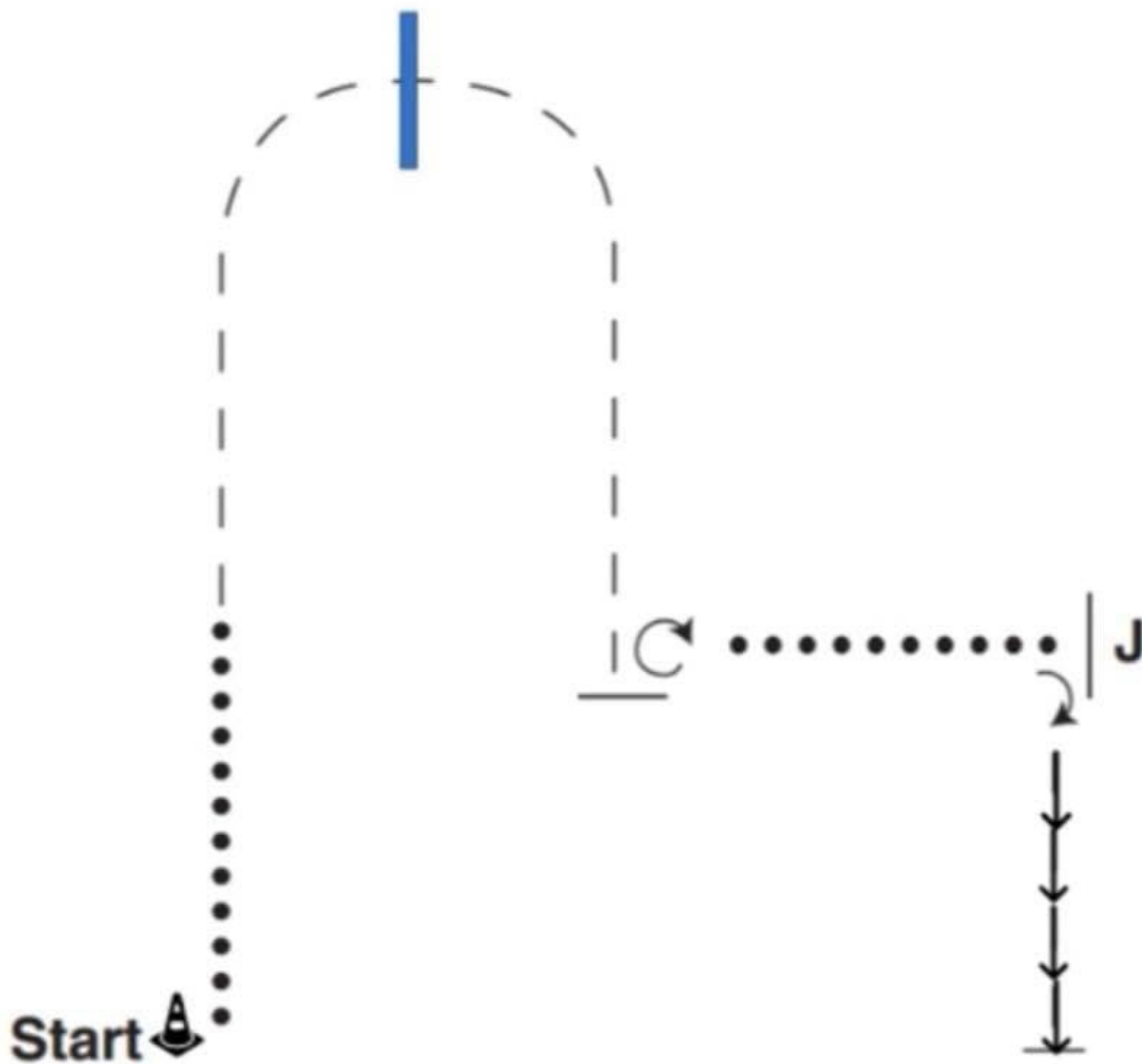


1. Walk
2. Trot
3. Extend the trot, at the top of the arena, stop
4. 360 degree turn to the left
5. Left lead 1/2 circle, lope to the center
6. Change leads (simple or flying)
7. Right lead 1/2 circle
8. Extended lope up the long side of arena (right lead)
9. Collect back to a lope around the top of the arena and back to center
10. Break down to an extended trot
11. Walk over poles.
12. Stop and back

- | | |
|--------------|-----------|
| Walk | ----- |
| Jog | - - - - - |
| Extended Jog | ----- |
| Lope | |
| Lead Change | // |
| Back | ← ← ← ← ← |
| Marker | (B) |

[RR/1]

Pattern Provided by:
Jennifer Sawyer, Judge



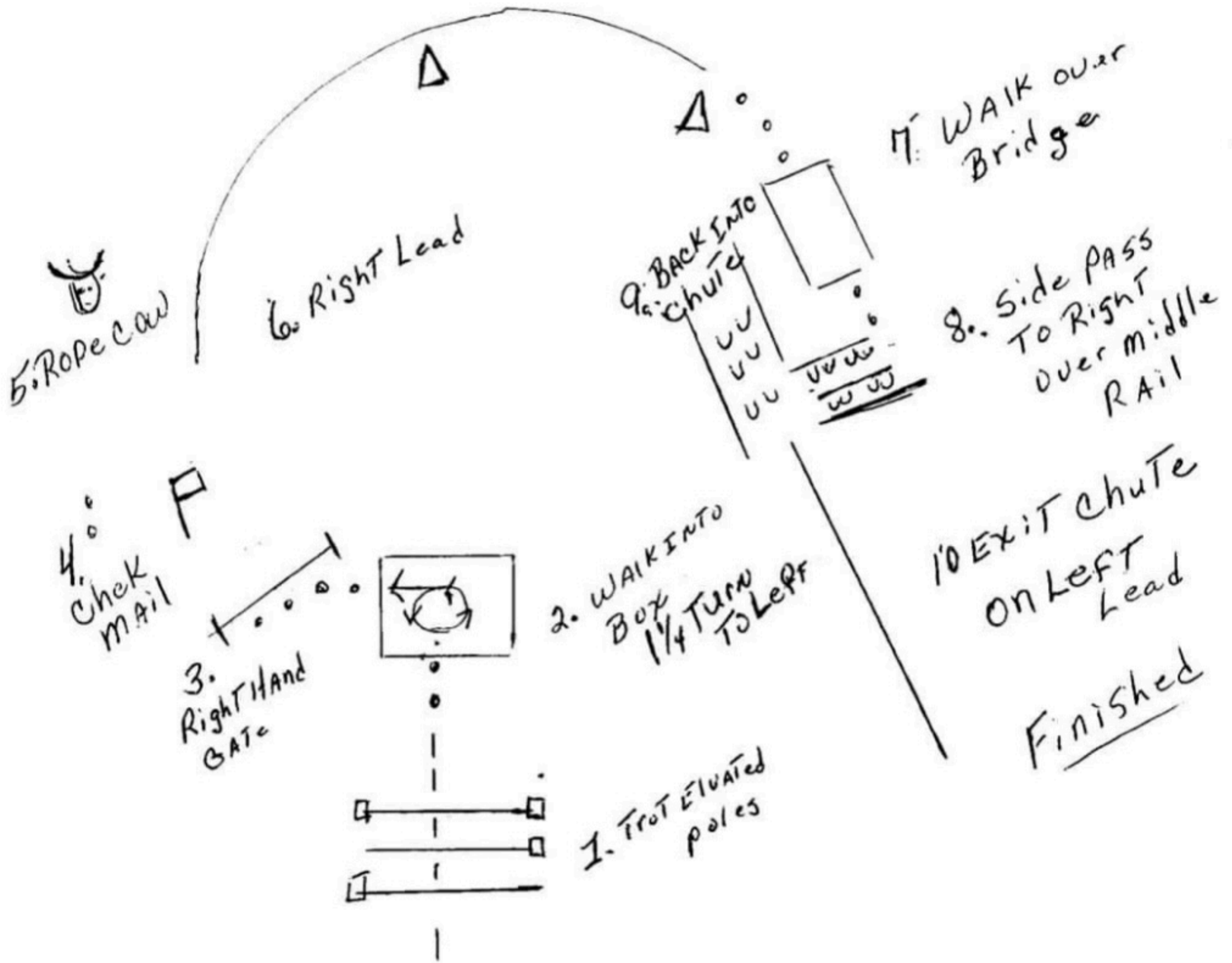
Be ready at Start Cone

1. Walk until even with Judge
2. Trot around end, over pole, until in line with Judge
3. Halt and perform a 270 degree turn
4. Walk to Judge and set up for inspection
5. When dismissed, perform 90 degree turn
6. Extended trot to exit

Ranch Ground Handling

RANCH TRAIL

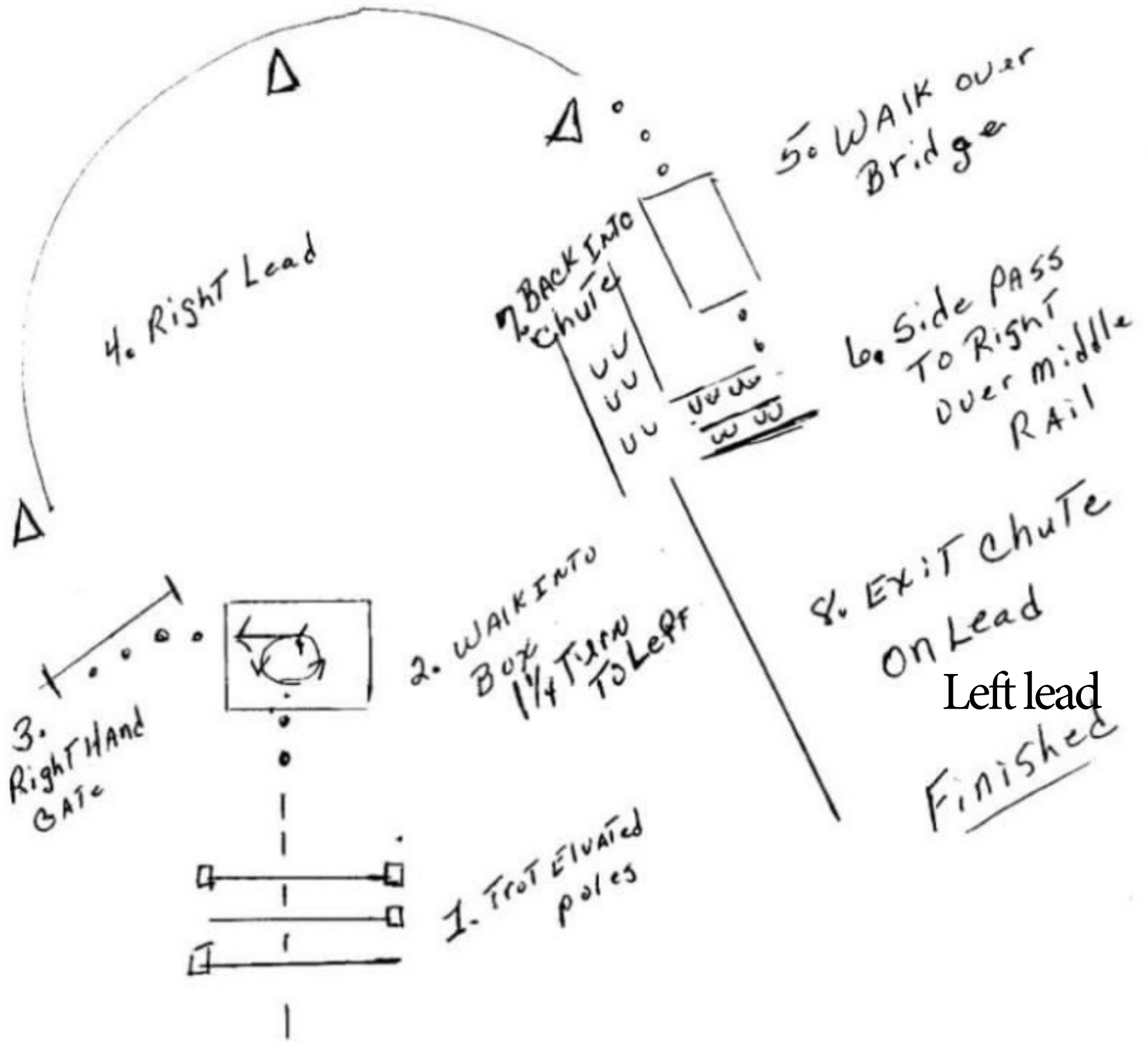
Show Date
3-2-2025



Finished



Trail



**WT/In Hand Trot in place
of Lope**